

QUEEN DENTAL



OUR BRAND

QUEEN DENTAL: Perfection in every detail

Welcome to the world of QUEEN DENTAL, the German manufacturer of dental materials, where quality and innovation come together in perfect harmony.

Our mission goes beyond simply creating products; it's about inspiring doctors and patients to reach new heights of trust and confidence in patient care.

Our journey towards excellence began in a picturesque German village, nestled in a landscape that inspires progress. We established our first R&D center in a building that once crafted the world-famous Ruhla watches. In this unique setting, our dedicated professionals embarked on a passionate journey to develop the next generation of dental materials.

At QUEEN DENTAL, we never settle for anything less than excellence. We continuously push the boundaries,

utilizing the latest innovations in composite chemistry to create products that exceed expectations. Our materials undergo rigorous testing and research to meet the highest standards and the demanding needs of dentists.

Our mission is clear: we are not just manufacturers. We are creators of products that uphold the most stringent quality standards, enabling clinicians to provide patients with dependable and effective solutions. Our commitment extends not only throughout Germany but across the globe.

We invite you to join us on our pursuit of perfection. With QUEEN DENTAL, you'll not only receive products but also the support you need along your journey towards a thriving dental practice. We take immense pride in the meticulous attention to detail and the genuine care we infuse into each of our products, all dedicated to the well-being of your patients.

1. HYGIENE

QUEEN DENTAL

RHAPSODY



Sodium bicarbonate powder for professional oral hygiene. It has a gentle effect on soft tissue, enamel, root surface, direct and indirect restorations, removing biofilm from their surface in just 5 seconds.

PROPHYLAXIS
CARIES

IMPLANTS CARE

KIDS
STOMATOLOGY

PROPHYLAXIS
DISEASES PARODONTE



SURGICAL
STOMATOLOGY

ORTHODONTIC
TREATMENT

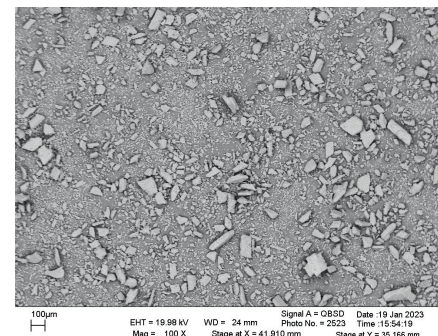
ESTHETICAL
STOMATOLOGY

PROPHYLAXIS POWDER

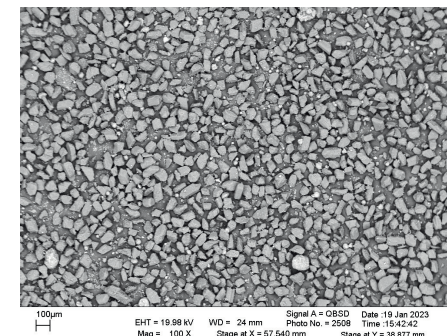
1. HYGIENE

QUEEN DENTAL

CHARACTERISTICS OF RHAPSODY FLOW POWDER



Rhapsody flow



Similar powder for cleaning with
air abrasive machines

Compared to most air-abrasive dental powders available on the market, RHAPSODY FLOW offers a gentle yet effective solution for cleaning tooth enamel and removing plaque. Its finely reduced particle size ensures a polishing effect, making it a standout product.

What sets RHAPSODY FLOW apart is its exceptional comfort and safety for the delicate tissues within the oral cavity. This makes it a suitable choice even for children, ensuring a worry-free dental experience.

Additionally, RHAPSODY FLOW proves to be an excellent option for the treatment of veneers, onlays, and crowns. These dental restorations often harbor a significant amount of biofilm and microorganisms. With RHAPSODY FLOW, you can confidently address these concerns, knowing that it provides thorough and gentle cleaning for even the most delicate dental work.

Choose RHAPSODY FLOW for a dental powder that combines effectiveness, safety, and versatility, delivering exceptional results and peace of mind for both practitioners and patients.

RHAPSODY FLOW
has an optimum particle
size and is suitable for use
in manufacturers'
air-abrasive machines

RHAPSODY FLOW

8 FLAVORS



RHAPSODY FLOW
NEUTRAL

Flavor: neutral
Set: 300 g bottle



RHAPSODY FLOW
LEMON

Flavor: lemon
Set: 300 g bottle



RHAPSODY FLOW
TROPIC

Flavor: fruits
Set: bottle 300



RHAPSODY FLOW
CHERRY

Flavor: cherry
Set: 300 g bottle



RHAPSODY FLOW
STRAWBERRY

Flavor: strawberry
Set: 300 g bottle



RHAPSODY FLOW
BARBERRY

Flavor: barberry
Set: 300 g bottle



RHAPSODY FLOW
MINT

Flavor: mint
Set: 300 g bottle



RHAPSODY FLOW
BLACK CURRANT

Flavor: black currant
Set: 300 g bottle

1. HYGIENE



instructions
for use

EVEREST

GLASS IONOMER CEMENTS

- HIGH STRENGTH COMPRESSION AND TENSILE STRENGTH
- PROLONGED WORK TIME
- OPTIMAL CONSISTENCY
- EXCELLENT ADHESION
- BACTERIOSTATIC EFFECT
- EFFECT OF PROLONGED FLUORIDE EXPOSURE
- FAST CURING
- IMPRESSIVE RADIOCAPACITY



2. GLASS IONOMER CEMENTS

QUEEN DENTAL



instructions
for use

EVEREST I

Radiopaque glass ionomer luting cement.

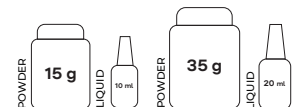
Due to its exceptional physico-chemical characteristics, EVEREST I forms a robust bond between the metal and the tooth structure, ensuring enduring strength and the utmost integrity of long-term restorations. The film thickness of EVEREST I provides a secure foundation for the fixation of crowns, bridges, posts, and various prosthetic restorations. In comparison to traditional phosphate cements, EVEREST I incorporates polyacrylic acid, enhancing adhesion and improving the chemical bond between the cement and dentin while preventing pulp irritation. It's easy to prepare, process, and employ, making it a convenient choice for dental practitioners.

EVEREST I is designed for a wide range of applications:

- Metal, metal-ceramic, zirconia, and metal-composite crowns and bridges based on various metal alloys.
- Ceramic and metal inlays/onlays.
- Ceramic crowns and bridges.
- All-composite crowns, bridges, inlays/onlays using various composite materials.

Choose EVEREST I for superior bonding and versatility in your dental restorations, ensuring both strength and aesthetics for your patients.

COMPLETE



TECHNICAL CHARACTERISTICS

Mixing time	max 2 min
Removal of excess material	3-4 min
Curing time	2.5-8 min
Film thickness	max 25 µm
Adhesion strength	high
Curing	chemical
Compressive strength (min)	50 MPa



instructions
for use

EVEREST IX

Radiopaque glass ionomer restorative cement.

Introducing EVEREST IX, the cement designed for direct restorations, offering an array of benefits that cater to your dental needs. This cement boasts enhanced wear resistance, making it a reliable choice for restorations, including fillings in both masticatory and deciduous teeth. EVEREST IX's ease of packing and modeling within the tooth cavity simplifies the restoration process. Its high strength ensures the durability of restorations, while its exceptional shear strength guarantees excellent adhesion to dental hard tissue. With EVEREST IX, you can trust in its superior performance and user-friendly application, meeting the stringent demands expected from glass ionomer restorative cements.

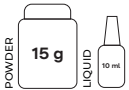
EVEREST IX is designed for a wide range of applications, including:

- Filling and restoring cavities of classes I, II, III, and V (according to Black's classification).
- ART-technique of filling.
- Spacer for composite restorations.
- Long-term filling.

Elevate your dental practice with EVEREST IX, the ultimate choice for efficient and effective restorations.

Shades: A1, A2, A3, A3.5, OA2

COMPLETE



TECHNICAL CHARACTERISTICS

Mixing time	max 2 min
Removal of excess material	3-4 min
Curing time	2-6 min
Adhesion strength	high
Curing	chemical
Compressive strength (min)	50 MPa



3. COMPOSITE

CHAMPION

Every product within the CHAMPION line embodies the essence of the restoration artistry. Our materials are distinguished by unparalleled strength and elasticity, enabling you to restore teeth with remarkable precision and a truly natural appearance. We understand that every smile deserves meticulous attention to detail. To us, restoration is not merely a procedure; it is an opportunity to evoke emotion. QUEEN DENTAL products go beyond granting your patients a new smile; they enhance their overall quality of life. Experience the excellence of German craftsmanship with our materials, and elevate your practice to new heights of artistry and patient satisfaction.

QUEEN DENTAL





instructions
for use

CHAMPION FLOW

Light-cured flowable restorative composite medium flowability.

CHAMPION FLOW composite material eliminates the need for mixing, saving valuable time in a dentist's daily practice. Its fluid consistency enables it to reach even the tiniest crevices within the tooth, forming a thin and dense layer. The non-sticky texture of the material seamlessly adapts to the contours of the cavity walls, making the dentist's work smoother and more efficient.

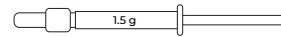
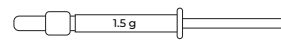
Key Advantages:

- Exceptional resistance to abrasion.
- Effortless polishing.
- Ideal for fissure sealing.
- Consistent bond strength, regardless of filling method or cavity depth.
- Enhanced radiopacity for postoperative diagnosis.

Choose CHAMPION FLOW for a composite material that simplifies procedures while delivering outstanding results, ensuring both patient and practitioner satisfaction.

Shades: A1, A2, A3, A3.5, A4, B1, B2, B3, C2, OA2, OA3

COMPLETE



SYRINGE 2 PCS.

TECHNICAL CHARACTERISTICS

Film thickness

max 50 mm

Curing depth

opaque colors max 1.0 mm/min
non-opaque colors max 1.5 mm/min

Bending strength

80 MPa $\mu\text{g}/\text{mm}^3$

X-ray contrast

min 1 mm aluminum

Filling by weight

65%

Compatibility

- with halogen lamps
- with plasma lamps
- with LED lamps
- with curing lamps

Curing depth

30 sec. 3 mm



instructions
for use

CHAMPION LOW FLOW

Light-cured flowable restorative composite low flowability.

CHAMPION LOW FLOW offers dental clinicians a versatile choice of materials tailored to specific clinical needs. This high-viscosity, light-curing composite excels in its performance. Its thicker consistency makes it an ideal choice for class III and V cavity fillings, providing

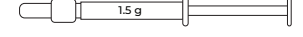
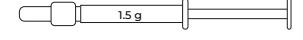
Key Advantages:

- Exceptional resistance to abrasion.
- Effortless polishing.
- Suitable for fissure sealing.
- Consistent bond strength, irrespective of the filling method.
- Enhanced radiopacity, aiding in postoperative diagnosis.

Select CHAMPION LOW FLOW for a composite material that combines ease of use with superior results, ensuring your patients receive the best in dental care.

Shades: A1, A2, A3, A3.5, A4, B1, B2, B3, C2, OA2, OA3

COMPLETE



SYRINGE 2 PCS.

TECHNICAL CHARACTERISTICS

Film thickness

max 50 mm

Curing depth

opaque colors max 1.0 mm/min
non-opaque colors max 1.5 mm/min

Bending strength

80 MPa $\mu\text{g}/\text{mm}^3$

X-ray contrast

min 1 mm aluminum

Filling by weight

70%

Compatibility

- with halogen lamps
- with plasma lamps
- with LED lamps
- with curing lamps

Curing depth

30 sec. 3 mm

For the convenience
dentist are available
in three degrees of
viscosity: high,
medium and low
flowability



3. COMPOSITE

QUEEN DENTAL



instructions
for use

CHAMPION HIGH FLOW

Light-cured flowable restorative
composite high flowability.

CHAMPION HIGH FLOW stands as a light-curing, high-flow, low-modulus composite, meticulously designed to ensure precise cavity filling while creating a thin and dependable layer.

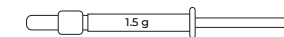
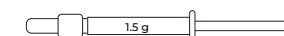
Key Advantages:

- Exceptional resistance to abrasion.
- Effortless polishing.
- Ideal for fissure sealing.
- Consistent bond strength, no matter the filling method.
- Enhanced radiopacity for postoperative diagnosis.

Opt for CHAMPION HIGH FLOW, and experience the perfect blend of ease of use and exceptional results in your dental practice, providing your patients with top-tier care.

Shades: A1, A2, A3, A3.5, A4, B1, B2, B3, C2, OA2, OA3

COMPLETE



SYRINGE 2 PCS.

TECHNICAL CHARACTERISTICS

Film thickness

max 50 mm

Curing depth

opaque colors max 1.0 mm/min
non-opaque colors max 1.5 mm/min

Bending strength

80 MPa $\mu\text{g}/\text{mm}^3$

X-ray contrast

min 1 mm aluminum

Filling by weight

60%

Compatibility

- with halogen lamps
- with plasma lamps
- with LED lamps
- with curing lamps

Curing depth

30 sec. 3 mm



instructions
for use

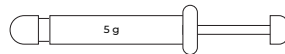
CHAMPION UNIVERSAL

A light-curing, high-viscosity polymer composite enriched with a finely blended radiopaque filler composed of barium borosilicate glass.

This exceptional composite material offers an array of advantages, including remarkable abrasion resistance, precise dentin adaptation, and outstanding polishability. CHAMPION UNIVERSAL is versatile and suited for a wide range of restoration applications. It excels in mimicking the properties of natural tooth enamel, including color, luster, opalescence, and fluorescence, ensuring a seamless blend with the patient's existing dentition.

Shades: A1, A2, A3, A3.5, A4, B1, B2, B3, B4, C1, C2, C3, D2, D3, OA1, OA2, OA3

COMPLETE



SYRINGE 1 PCS.

TECHNICAL CHARACTERISTICS

Film thickness	max 50 mm
Curing depth	opaque colors max 1.0 mm/min non-opaque colors max 1.5 mm/min
Bending strength	80 MPa $\mu\text{g}/\text{mm}^3$
X-ray contrast	min 1 mm aluminum
Filling by weight	65%
Compatibility	• with halogen lamps • with plasma lamps • with LED lamps • with curing lamps
Curing depth	30 sec. 3 mm



instructions
for use

QUEENETCH

A water-soluble gel formulated with 38% orthophosphoric acid for enamel and dentin etching.

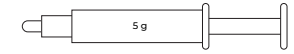
QUEENETCH Gel boasts an optimal viscosity that enables effortless penetration into deep and narrow fissures, ensuring it adheres to vertical surfaces without running off. The etching process triggers the creation of micro-pores on the enamel surface and facilitates the swift removal of the dentin layer. This, in turn, enhances the opening of dentinal tubules, allowing for deep penetration of the adhesive system and the formation of a robust hybrid zone.

Notable Features:

- Easy and rapid application, thanks to its excellent thixotropic properties.
- Quick and complete removal with a water-air spray.

Choose QUEENETCH Gel for a reliable and efficient solution in the etching process, ensuring the optimal conditions for dental procedures

COMPLETE



SYRINGE 1 PCS.

TECHNICAL CHARACTERISTICS

Average depth at etching time of 20 sec.	1.9 μm
Color	blue gel
Odor	odorless
pH at 20°C°	<0.5 100 g/l
Density	1.5 - 1.7 g/cm ³



BOND

Adhesive systems Queen Dental

- The thin adhesion layer establishes a flawless contact surface.
- Compatible with all light-curing composites.
- Forms a robust bond between the composite and dentin, rivaling the strength of enamel-dentin bonding.
- Helps alleviate polymerization stress by mitigating composite stress during shrinkage.
- The ethanol-based solvent minimizes the risk of hypersensitivity.
- Ensures secure marginal adhesion of the restoration.



4. ADHESION

CHAMPION BOND

Light-cured single-component bonding agent.



instructions
for use

CHAMPION BOND is your go-to choice for establishing a resilient bond with the adhesive system in dentin. It comes highly recommended as the primary adhesive system for your daily dental practice. With CHAMPION BOND, you can trust in a dependable and lasting bond, ensuring the success of your dental procedures and the satisfaction of your patients.

MAGIC BOND

Light-cured self-etching bonding agent.



instructions
for use

The MAGIC BOND adhesive system offers a myriad of advantages characteristic of 7th-generation systems: the elimination of the etching and rinsing steps, a streamlined and expedited working method, and multifunctionality. With MAGIC BOND, you have access to a versatile and efficient adhesive system that simplifies your dental procedures, saving you time and ensuring optimal results

QUEEN DENTAL

COMPLETE



TECHNICAL
CHARACTERISTICS

Color

yellow

pH at 20C°

1.8-2.2

Density

1.1-1.4 g/cm³

Polymerization depth

max 3.5 mm/min

Compatibility

- with halogen lamps
- with plasma lamps
- with LED lamps
- with curing lamps

COMPLETE



TECHNICAL
CHARACTERISTICS

Color

yellow

pH at 20C°

1.6-2.0

Density

0.9-1.3 g/cm³

Polymerization depth

max 3.5 mm/min

Compatibility

- with halogen lamps
- with plasma lamps
- with LED lamps
- with curing lamps

ENDOMAX KIT

ROOT CANAL SEALER-ZINC OXIDE
EUGENOL CEMENT

The distinctive qualities of this product ensure reliable curing even in moist environments where blood and various organic fluids may be present. The ENDOMAX KIT stands as a proven method for effectively sealing root canals. It's formulated with zinc oxide as its base, facilitating easy introduction into canal cavities. The extended curing period of the paste (up to 72 hours) allows for straightforward material removal and reapplication if necessary.

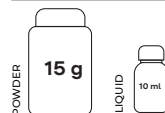
Furthermore, the ENDOMAX KIT is non-absorbent and does not discolor teeth. It is free of formaldehyde. The inclusion of an anti-inflammatory component serves to reduce pain and minimize the risk of infection. This product creates an optimal barrier against the infiltration of fluids and bacteria, thereby preventing postoperative sensitivity. Its notable antiseptic properties also contribute to the destruction of pathogenic microorganisms.

Choose the ENDOMAX KIT for a reliable solution in root canal sealing, ensuring patient comfort and a successful outcome in dental procedures.



instructions
for use

COMPLETE



TECHNICAL CHARACTERISTICS

Full curing time in the root canal
72 hours

Thickness

min 17 mm

Film thickness

> 50 microns

Solubility

> 3.0%

Radiopacity

min 3 mm

5. ENDODONTICS

QUEEN DENTAL



Establishes an optimal
barrier, preventing
the infiltration of liquids
and bacteria, while also
averting the onset
of postoperative
sensitivity

WR

PREP

ROOT CANAL PREPARATION GEL

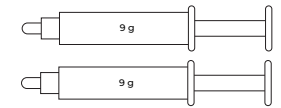
instructions
for use

WR PREP is a product designed for the chemical and mechanical treatment of challenging, intricate root canals within the complex anatomical structure of teeth. It aids in locating the openings of root canals and effectively removes remnants of pulp tissue and root dentin that may accumulate during instrumental treatment. Thoroughly cleaned and prepared root canals are pivotal for successful treatment.

Key Advantages:

- Facilitates the chemical expansion of root canals.
- Ensures smooth instrument movement for enhanced comfort.
- Compatible with both manual and mechanical tools.
- Cleans canal walls from infected dentin and organic residues.
- Exhibits bactericidal properties, eliminating pathogens.
- User-friendly application with the convenience of an applicator.

Choose WR PREP for a reliable solution that streamlines the treatment process, ensuring the best possible outcome for your patients.

COMPLETE

SYRINGE 2 PCS.

**TECHNICAL
CHARACTERISTICS**Form
pasteColor
whiteOdor
odorlessSolid content
61-95%

When combined with a sodium hypochlorite solution, it initiates active foaming, effectively aiding in the cleaning of the pulp chamber

CALCEDENT



High efficiency
two-stage medication
for desensitization
sensitivity of the hard
tissues of the teeth,
caries prevention
and pulp protection
during treatment

6. FLUORIDATION

QUEEN DENTAL

CALCEDENT DENTIN

Deep-penetration fluoridation set.



COMPLETE



instructions
for use

A two-stage preparation designed to alleviate the sensitivity of hard tooth tissues, prevent caries, and safeguard the pulp during treatment. It offers deep fluoridation and remineralization of enamel, even after procedures such as whitening or professional dental hygiene.

CALCEDENT ENAMEL

Deep-penetration fluoridation set.



COMPLETE



instructions
for use

Our Enamel Sealing Liquid, CALCEDENT ENAMEL, is meticulously formulated to deliver profound enamel fluoridation, offering dependable protection and effective tooth remineralization. This product is specifically employed to alleviate tooth enamel sensitivity.

Key Advantages:

- Secure sealing of dentinal tubules.
- Immediate and long-lasting desensitizing effect.
- Continuous fluoride release.
- Caries prevention.
- Effective protection of exposed dentin surfaces.
- Quick and straightforward application - the procedure takes just 30 seconds.
- Highly efficient mineral fissure sealing.

Choose this product for a comprehensive solution that not only addresses tooth sensitivity but also provides enhanced oral health benefits, all with ease and efficiency in mind.

sales@queendental.de
DE +49 36929 139999

QUEEN DENTAL GmbH,
Neue Straße 67, 99846 Seebach DE,
Germany
www.queendental.de

